

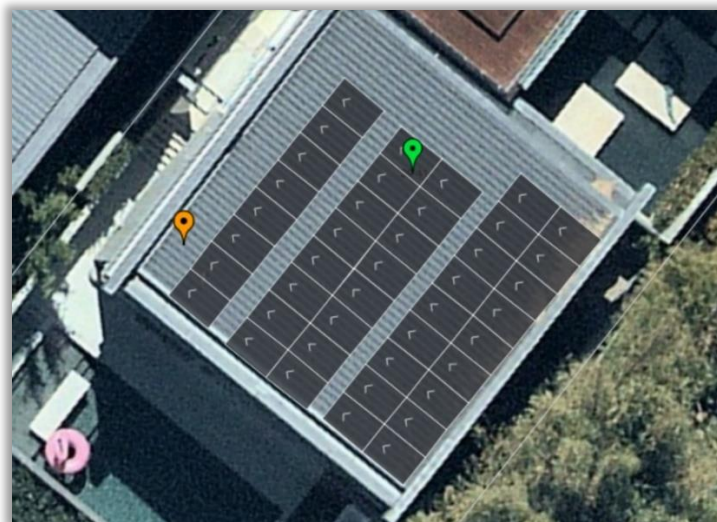
Roof Mount System Calculator

Instructions.

Before using the calculator please ensure you have:

- A layout of the solar panels on the roof.
 - The solar panel dimensions chosen to be used. Important for middle and end clamp size needed. As well as determining what rail length best suited for the job.
 - The location of install.
 - Roof profile type – this could be tin, tile, trim dek, klip lok etc. The calculator will note this as feet.
 - The height of the roof.
 - The distance the customer plans to install the solar racking feet (or brackets) on the roof. This will be dictated by the purlins on the roof. The customer must review the Radiant installation guides for understanding maximum spans allowed.
-

To assist, this guide will use the below example for instructional purposes.



Layout: the above layout lets us see the setup required of the panels. In this example we have three rows of 8, and two rows of 9.

Location: Brisbane.

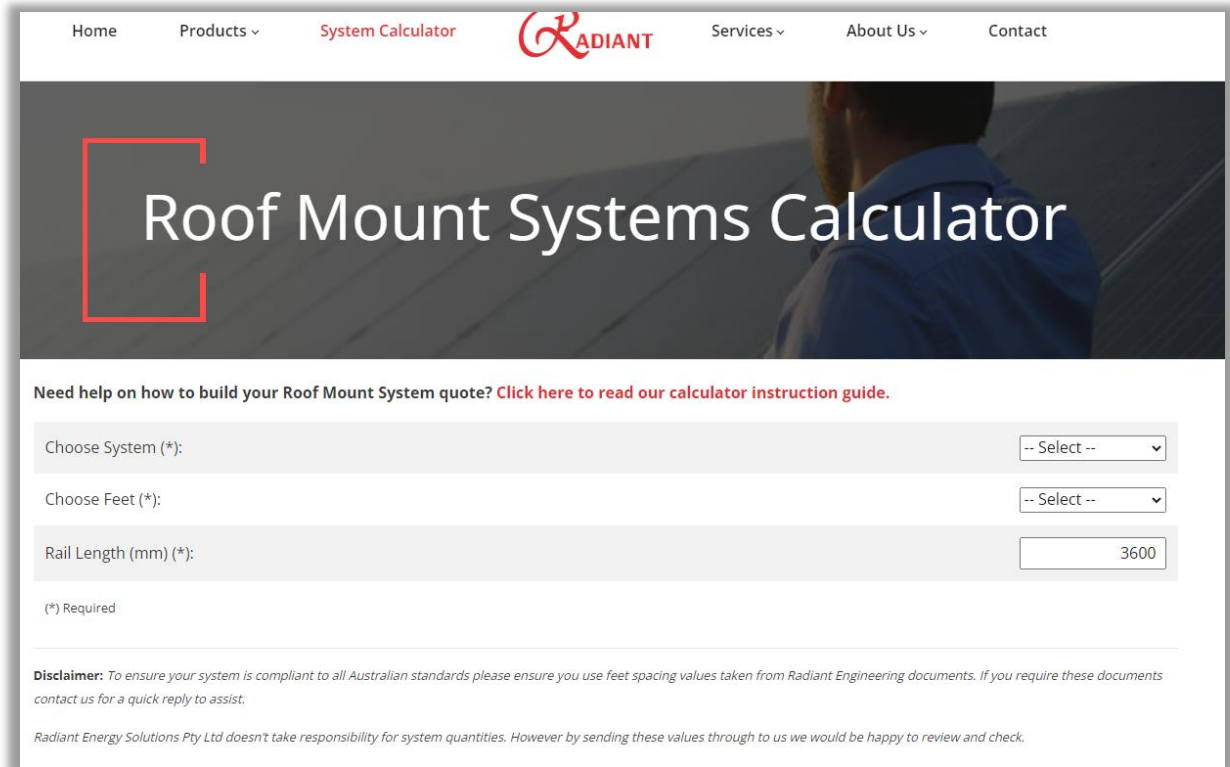
Roof profile: Corrugated Tin.


Height of building: 8m.

Distance between purlins: 900mm.

Panel Width: 1134mm

Using the example above, go to the Radiant website to access the Solar Calculator.



Home Products System Calculator  Services About Us Contact

Roof Mount Systems Calculator

Need help on how to build your Roof Mount System quote? [Click here to read our calculator instruction guide.](#)

Choose System (*):

Choose Feet (*):

Rail Length (mm) (*):

(*) Required

Disclaimer: To ensure your system is compliant to all Australian standards please ensure you use feet spacing values taken from Radiant Engineering documents. If you require these documents contact us for a quick reply to assist.

Radiant Energy Solutions Pty Ltd doesn't take responsibility for system quantities. However by sending these values through to us we would be happy to review and check.

Step 1. Choose the system.

If laying panels flat to the roof click “Flat to Roof”.

If tilting the panels with a tripod click “Tilt”.

In this example choose “Flat to Roof”.

Step 2. Choose Feet.

Various Radiant feet will appear in the drop-down option.

In this example choose “Tin Feet”.

Step 3. Choose Rail Length.

The calculator will have pre set the rail length at 3600mm. If different lengths are used enter the alt length.

In this example choose “3600mm”.

This last step should provide a new drop down. See next page.

Choose System (*):
Flat to Roof ▾

Choose Feet (*):
Tin Feet ▾

Rail Length (mm) (*):
3600

(*) Required

System Details

Number of panels in each row (*)	<input type="text" value="0"/>
Spacing between feet (mm) (*)	<input type="text" value="0"/>
Number of rows of this number of panels (*)	<input type="text" value="0"/>
Width of panel being used (mm) (*)	<input type="text" value="0"/>

Add More

Parts Required

Rail (3600 mm)	0
Splice	0
Middle Clamp	0
End Clamp	0
Earthing Clip	0
Earthing Lug	0
Tin Feet	0
Rail Cap	0

All that is required now is to complete the “Setups”.

Because we have rows of 8 panels and rows of 9 panels, we will need two setups.

Setup 1 will be:

8 panels in a row at 900mm between feet. X 3

Setup 2 will be:

9 panels in a row at 900mm between feet. X 2

Once you enter this information the calculator will produce quantities to fulfill the system.

See next page.

Choose System (*):
Flat to Roof ▾

Choose Feet (*):
Tin Feet ▾

Rail Length (mm) (*):
3600

(*) Required

System Details

Number of panels in each row (*)	<input type="text" value="9"/>
Spacing between feet (mm) (*)	<input type="text" value="900"/>
Number of rows of this number of panels (*)	<input type="text" value="2"/>
Width of panel being used (mm) (*)	<input type="text" value="1134"/>

[Add More](#)

Parts Required

Rail (3600 mm)	30
Splice	20
Middle Clamp	74
End Clamp	20
Earthing Clip	74
Earthing Lug	10
Tin Feet	124
Rail Cap	20

[Send Me This Quote](#)

Number of panels in each row (*)	<input type="text" value="8"/>
Spacing between feet (mm) (*)	<input type="text" value="900"/>
Number of rows of this number of panels (*)	<input type="text" value="3"/>
Width of panel being used (mm) (*)	<input type="text" value="1134"/>

Entering the information above will give you a bill of materials (Parts Required) for the system.

Note: these are the basic requirements for a system only.

For any questions relating to Radiant please contact us at:

sales@radiant-pv.com or 07 3907 0924.