

Project



Reliable Energy Solutions

PV-TerrainRac N

Ground-mounting system for PV modules/Laminates



Flexible ground mount system

The N SYSTEM was specifically designed for use in open ground areas. Framed and unframed modules can be arranged in various configurations. The TerrainRac N system is suitable for both ground screw and concrete foundations.

Ecological and Functional

The 0.6m minimum module elevation above the ground prevents loss of power due to noxious ground covers overshadowing the modules, and allows a secondary use of the terrain as pasture land.

Significant savings

- A high percentage of factory pre-assembled components delivers significant installation savings.
- Easy installation. We provide a simple and easy to understand installation guide. The main structural components

of the system are marked with different colors so that you can see which parts connect together. (pink to pink, blue to blue, etc).

- Our Terrainrac N systems offer excellent tolerances for vertical and horizontal adjustment.
- A completely modular installation program.

Engineering Excellence

We provide static analysis and material optimization for each project. All stability tests are carried out according to current standards.

Maximum service life

All components are made of aluminum (anodized AL6005-T5) and stainless steel (SUS304) guaranteeing long serviceability, pleasing aesthetics, a high recyclable value and low, waste disposal costs. Maintenance costs are minimized due to the long lasting anodized finish.

PV-TerrainRac N

PV-TerrainRac N

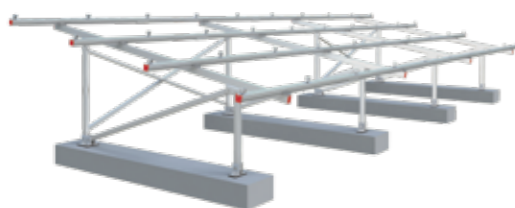


Height adjustment tolerance: 30mm
North and south direction adjustment tolerance: 40mm

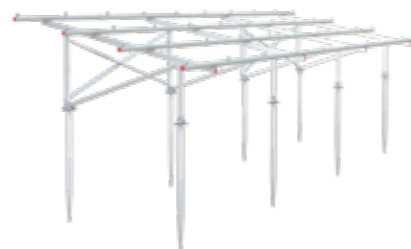
SAVE
50%



Suitable Foundation: Concrete



Suitable Foundation: Ground Screw



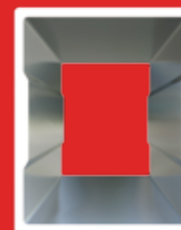
A-1: Cross Beam 40x60

Material: AL6005-T5



A-2: Pillar 40x50

Material: AL6005-T5



Base Rail: 60X60, 60X80, 60X100



Channel weight: 1.252kg/m, 1.477kg/m, 1.842kg/m
Material: AL6005-T5
Permitted Tension σ_{zul} : 235N/m²
Anodizing thickness: $\geq 12 \mu\text{m}$



Base Rail 60/60 Splice, Base Rail 60/60 Splice II



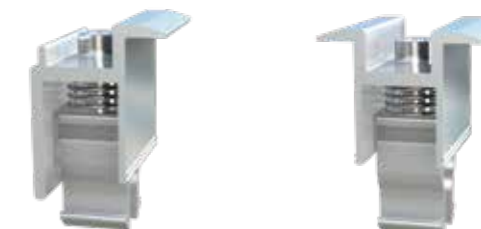
Material: AL6005-T5 & SUS304



Module End / Middle Clamp Kit



Module Thickness: 30mm-52mm
Module orientation: Landscape, portrait
Material: AL6005-T5 & SUS304



Technical Datasheet:

Application	Open terrain - ground mount
Wind load	up to 42m/s
Snow load	1.4KN/m ²
PV modules	Framed, unframed
Module layout	According to requirement
Module orientation	Landscape, portrait
Module inclination	0° - 45°
Ground clearance	APP 0.6m
Standards	JIS 8955: 2011/DIN1055/ASCE_7-05/AS/NZS1170
Color	Natural



Open terrain



Wind load $\leq 42\text{m/s}$



Snow load 1.4KN/m²



Framed module



Unframed module



Orientation landscape



Orientation portrait